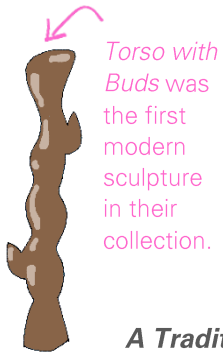


A TRADITION OF REVOLUTION

FAMILY GALLERY GUIDE

THE COLLECTORS

It all started with Raymond and Patsy Nasher, a couple who loved innovative sculptures.



Torso with Buds was the first modern sculpture in their collection.

A Tradition of Revolution shows the many ways artists break the rules.

MATERIAL MANIA

Artists are often excited to use new technology and materials in their work.

CAN YOU FIND SCULPTURES MADE FROM:

- Bronze
- Clay
- Plaster
- Steel
- Wax
- Wood



What other materials can you find?

What do you like to make art with?

POSE

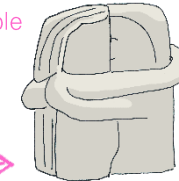
A **pose** can share many different ideas like power, love or even trickery. An artist can be inspired by a pose and create a **realistic** or **abstract** sculpture.

Realistic sculptures often have lifelike details. **Abstract sculptures** have been simplified.

GET A PARTNER

- ★ One person should strike a pose.
- ★ The other person should make a quick sketch.

The Kiss shows two people posed in an embrace



ARTIST SPOTLIGHT

REBEL REBEL

Name: Phyllida Barlow

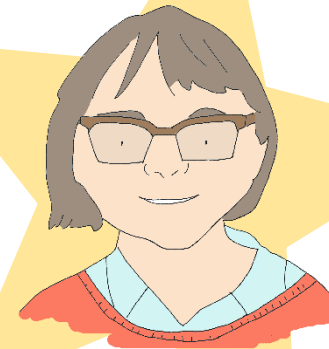
Born: 1944 Newcastle upon Tyne, England

Phyllida Barlow is an artist who lives and works in England. She taught at the Slade School of Fine Art.

Barlow creates sculptures from everyday materials like bubble wrap, tape, wood and cardboard.

Quote: "Things happen without thinking. They happen through the process."

Look for Barlow's sculptures in the galleries.



ARTIST PROFILE

DRAW YOUR PORTRAIT HERE



Name:

Born:

I am inspired by:

I like to make art about: